

TE REO IRIRANGI O
WHANGANUI AWA FM



PŪRONGO Ā-TAU

ANNUAL REPORT

2022 - 2023

WHĀRANGI IHIRANGI

CONTENTS



03

MESSAGE FROM THE
CHAIRWOMAN

04

HIGHLIGHTS

05

MĀORI LANGUAGE PLAN AND
EVALUATION

08

FINANCIAL STATEMENTS

12

ANNUAL STATEMENT OF
PERFORMANCE

22

HE KOHINGA WHAKAAHUA

HE KŌRERO NĀ TE HEAWAHINE

MESSAGE FROM THE CHAIRWOMAN

Kei aku nui, kei aku rahi, tēnā koutou katoa. E mihi nui ana ki koutou e tautoko nei i tēnei taonga o tātou, i Te Reo Irirangi o Whanganui, Awa FM. Ko te tūāpapa o tō tātou whare ko te whakarauora i te reo, i ngā tikanga ka mutu, i te ahurea o ō tātou iwi - i Parininihi ki Waitōtara, Waitōtara ki te Kāhui Maunga, i te Kāhui Maunga ki Tangaroa.

Today, we reaffirm our commitment to the vision of our radio station. We continue to strive to preserve our reo and stories, bring our history to life and stay current and connected.

We've completed significant milestones this year including updating archives, broadcasting major regional events and local democracy reporting. We've also introduced new broadcast software to enhance the quality of our delivery, increase efficiency and stay current in the rapidly changing media landscape.

We've witnessed strong community engagement, especially in our online platforms, strengthened ties across our rohe, and increased outside broadcast capacity. As we move forward, we are actively enhancing our broadcasting capabilities including supporting kaimahi to pursue qualifications, attend wānanga reo and improve through self-evaluation.

I extend my gratitude to my fellow board members, the kaimahi and all our loyal supporters. My warmest regards to you all as we continue to work towards our vision - our people, our stories, our way.

Finally, I wish to acknowledge the 28-year commitment of our veteran broadcaster Pāpā Tom Webb who sadly passed away earlier this year. E te pāpā, kia toa, kia tere ki mua, hoki atu rā ki Hawaiki - you will be sorely missed by your Awa



RACQUEL MCKENZIE
CHAIRWOMAN



ANGITŪTANGA HIGHLIGHTS

The 2022 - 2023 year has seen the station achieve a full compliment of staff providing local content from 6.00am to 6.00pm Monday to Friday.

New talents joined and old talents return to the team of Awa FM radio. We wake up to the vibrant energy of Shea Rogan and ease into lunch with the wisdom of Rauru Broughton. Eruera Rerekura has held the fort until afternoon tea when the youthful voice of Te Waiata Meihana kicks in for the drive show.

Taylor-Roimata Nepia-Rewiti keeps us company during the weekend followed by our Pacific shows hosted by Ngametua Areaiti and Ben Seru.

Local Democracy Reporter, Moana Ellis has continued to bring local democracy matters to the attention of our listeners and more broadly to our community.

Led by Pou Mua, Manahi Cribb, the kaimahi are a true reflection of the whakataukī, “ko te amorangi ki mua, ko te hāpai ō ki muri”.

We acknowledge Rima Ririnui the longest standing employee at Awa FM who continues to keep things running smoothly in the background.

"Ahakoa ngā piki me ngā heke, e ora pai ana tō tātou reo irirangi, e ora ana hoki te reo o te awa."

A major highlight of the 2022-2023 year has been our growing ability to share more of our stories not only to the rohe but to the motu and beyond.

Broadcasting significant events such as the Ratana 25th, Te Matatini mauri arrival, Pae Rangatahi, Manu Kōrero, the repatriation of Te Kōanga o Rehua and much more is a testament to our commitment towards the Awa FM vision.

We celebrate that Te Reo o Te Uru Regional news collaboration has gained funding to continue and acknowledge the leadership of Te Korimako o Taranaki.

Lastly, this year funding partnerships were initiated with Te Atawhai o Te Ao and Te Oranganui Trust by the Pou Mua. These funding relationships have allowed us to provide a concentrated focus on kaupapa for our whānau.



RAUTAKI REO MĀORI

MĀORI LANGUAGE PLAN

Te Reo Irirangi o Whanganui is the primary media outlet which broadcasts the unique regional variation of te reo Māori, referred to by many Whanganui pāhake as ‘te tangi o te reo o Whanganui’, more widely known as ‘te mita o Whanganui’. This role comes with a responsibility to share high-quality reo content and contribute to the preservation and revitalisation of our unique reo.

The high-level objectives for this plan are:

Te Mātāpuna

Utilising pāhake and mātanga of te reo o Whanganui

Te Ia

High-quality delivery and promotion of a Whanganui world-view

Te Arawaru - Frequency and eloquence of delivery

Te Paringa Tai

Sharing and normalisation of te reo o Whanganui
A W A F M

Reo Capacity, Capabilities for an Awa FM Broadcaster. Te Reo Irirangi o Whanganui broadcasters are:

- Confident, fluent speakers of te reo o Whanganui
- Aware of, or able to source te reo o Whanganui exponents, pāhake to capture and share their reo and experiences
- Connected to Te Awa o Whanganui and reflect a Whanganui world-view in their reo and content
- Continuously improving their reo and seeking opportunities to strengthen their command of te reo o Whanganui
- Committed to promoting te reo o Whanganui both on-air and off-air

AROTAKENGA REO MĀORI

MĀORI LANGUAGE EVALUATION

Inenga 1 - Kōkako

| | |
|--|--|
| Did the show meet Kōkako reo quantity requirements? | Āe / Kāo (circle) |
| Are there any concerns or opportunities for improvement? | Notes / mihi / opportunity for improvement: <input type="text"/> |

Inenga 2 - Te reo o Whanganui

| Whāinga: | Kaimahi: (circle) | Pou Mua: (circle) | Notes / mihi / opportunity for improvement: |
|---|----------------------|----------------------|---|
| Present daily kōrero maramataka | Ae / Kāo | Āe / Kāo | |
| Strive to use te reo o Whanganui throughout show | Ae / Kāo | Ae / Kāo | |
| Play at least 1 interview where te reo o Whanganui is used per show | Ae / Kāo | Ae / Kāo | |
| Open/close show with karakia/ruruku o Whanganui | Ae / Kāo | Ae / Kāo | |
| Use at least 1 kīwaha/whakataukī o Whanganui | Ae / Kāo | Ae / Kāo | |
| Play 1 or more waiata Whanganui | Ae / Kāo | Ae / Kāo | |
| Use Whanganui ingoa for places | Ae / Kāo | Ae / Kāo | |

Inenga 3 - Te kounga o te reo e ai ki te rautaki reo o Awa FM

The following exercise is a self-evaluation with the aim to measure reo quality based on our iwi kōrero: *‘Rarangahia ngā muka, rangangahia ngā whenu, tuia Te Taura Whiri a Hinengākau’*.

To successfully weave the binding rope of Hinengākau that reminds all uri of Whanganui of our connection through whakapapa, the objective is to earn as many muka as possible through the measurements of kounga as outlined in [He Rautaki: Te Reo o Whanganui](#).

The lowest muka you can earn is 50, which means you're learning - you're halfway there! The highest muka you can earn is 100, which means through your reo you are able to weave our people together, me ko Hinengākau. Anything in between will help you and the Pou Mua to see how the quality of your reo is tracking and where you might need some support.

| Ngā whenu | 10 muka | 15 muka | 20 muka | Notes / mihi / opportunity for improvement: |
|---|--|--|--|---|
| Wheako <i>Experience</i> | I'm still learning te reo Māori and te reo o Whanganui | I'm a speaker of te reo Māori and learning te reo o Whanganui | I'm confident in te reo o Whanganui | |
| Wānanga <i>Education</i> | I'm enrolled in reo course level 1 or above or equivalent learning | I'm enrolled in reo course level 5 or above or equivalent learning | I'm a raukura of kura kaupapa / ā-iwi / rūmaki and actively seek opportunities to wānanga reo | |
| Te rere <i>Fluency</i> | Can greet people and introduce myself using te reo o Whanganui | Can converse and express my thoughts using te reo o Whanganui | Can express my thoughts confidently and across a wide range of topics / contexts in te reo o Whanganui | |
| Te raukotahi <i>Connecting with knowledge holders</i> | Personal relationship with 1 or more pāhake / knowledge holder of reo o Whanganui | Personal relationship with 5 or more pāhake / knowledge holder of reo o Whanganui | Personal relationship with 10 or more pāhake / knowledge holder of reo o Whanganui | |
| Ngā nuka reo <i>Language features</i> | Knows at least 1 kiwaha, whakataukī, waiata, karakia, pūrākau o Whanganui by heart | Knows at least 5 kiwaha, whakataukī, waiata, karakia, pūrākau o Whanganui by heart | Knows at least 10 kiwaha, whakataukī, waiata, karakia, pūrākau o Whanganui by heart | |
| Tuia(total): /100 | /50 | /75 | /100 | |

“Whāia kia eke tō reo ki ngā tihi o Koro Ruapehu, kia ruku ki te rētōtanga o tō tātou awa, o Whanganui e rere nei mai uta, ki tai, ka whakapāhotia ai ki te ao whānui.”



Performance Report

**Te Reo Irirangi O Whanganui Inc For
the year ended 30 June 2023**

Prepared by Spooner Hood & Redpath Limited

Contents

Page

| | |
|----|------------------------------------|
| 10 | Entity Information |
| 11 | Approval of Performance Report |
| 12 | Statement of Service Performance |
| 14 | Statement of Financial Performance |
| 15 | Statement of Financial Position |
| 16 | Statement of Cash Flows |
| 17 | Statement of Accounting Policies |
| 18 | Notes to the Performance Report |

Entity Information

Te Reo Irirangi O Whanganui Inc For the year ended 30 June 2023

Legal Name of Entity

Te Reo Irirangi O Whanganui Incorporated

Entity Type and Legal Basis

Te Reo Irirangi O Whanganui Incorporated is a duly incorporated society registered under the Incorporated Societies Act 1908 and is a public benefit entity registered as a charity under the Charities Act 2005.

Registration Number

CC38550

Entity's Purpose or Mission

To provide advice, information and advocacy to Whanganui iwi and the general public. Promoting the use, quality and growth of the Maori language.

Entity Structure

The entity is governed by an Executive Committee.

Executive Committee

| |
|--|
| Leah Marama McLachlan (resigned February 2023) |
| Leah Te Whata |
| Nancy Tuaine |
| Racquel McKenzie (Chair) |
| Whetu Moataane |

Kylee Osborne (appointed June 2023)

Main Sources of Entity's Cash and Resources

The main sources of income for Te Reo Irirangi O Whanganui Inc are operational grants from Te Mangai Paho and advertising.

Main Methods Used by Entity to Raise Funds

Te Reo Irirangi O Whanganui Incorporated is not an active fundraiser.

Entity's Reliance on Volunteers and Donated Goods or Services

The entity has minimal reliance on volunteers and donated goods and services.

Physical Address

Te Taurawhiri Building
357 Victoria Avenue
Whanganui, New Zealand, 4500

Contact Details

Postal: PO Box 430, Whanganui, New Zealand, 4541
Email: Enquiries@awafm.co.nz
Phone: 06 3471 402
Website: <http://www.awafm.co.nz>

Approval of Performance Report

Te Reo Irirangi O Whanganui Inc For the year ended 30 June 2023

The Trustees are pleased to present the approved financial report including the historical financial statements of Te Reo Irirangi O Whanganui Inc for year ended 30 June 2023.

APPROVED

For and on behalf of the

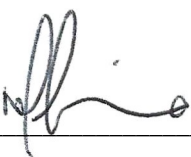
Trustees.

Signed _____

Approvers Name

Position

Date

Signed  _____

Approvers Name : Nancy Te Urumanao Tuaine

Position : Treasurer

Date: 17 October 2023

Statement of Service Performance

Te Reo Irirangi O Whanganui Inc For the year ended 30 June 2023

The following achievements were in each of the strategic priorities this year.

1. Bringing our history to life

The digitalising of the archives has been completed however further work is required to make some of the recordings suitable for use.

2. Improving the quality of our broadcasting

The on-air quality and output has improved this year after achieving a full complement of announcers who have increased our Te Reo fluency to 90% across the workforce. This has also enabled us to deliver local content programming from 7.00am to 6.00pm every weekday and helped us achieve our aspiration of 'getting radio right'.

In addition to this, the station has successfully reconnected all three transmissions sites this year with Taumarunui and Waimarino being updated.

3. Staying current and connected

Awa FM has become more visible across our communities with engagements and off-site broadcasts doubling in the past year. Securing greater diversity across our workforce has meant that we can provide different offerings to meet the different audiences across the day. This has helped meet our intent to remain connected and current to our audiences.

Our collaborations as part of Te Reo o Te Uru has ensured coverage occurs of most major whānau, hapū and Iwi events and in some instances facilitating co-labs with others in the communications field has enhanced the listener and viewer experiences.

4. Transforming to multimedia platforms and services

Progress in this area has been assisted by the younger complement of the team who have brought some skills and experience in multimedia platforms. There is still work to be done in this area and upskilling needed to ensure we maximise the potential of these mediums. As previously noted, our partnership in Te Reo o Te Uru has increased the ability of Awa FM to deliver quality stories into the multimedia platforms.

5. Growing investment

The improvement in quality and performance has been noted across Māori Business community and in two instances delivered co-funding for programmes where shared interests are defined and delivered.

Awa FM is also part of the National Māori Radio collective that distributes and manages national advertising contracts across the Māori radio network. The revenue from this stream has increased over time and tends to increase based on matters of national importance.

The primary financial contract of Awa FM is with Te Mangai Pāho. Below is the report produced by Te Mangai Pāho on the performance of Te Reo Irirangi o Whanganui, Awa FM against these milestones in the contract for the year ending 30 June 2023.

| | 2023 | | 2022 | |
|---|---|--|---|--|
| Outputs | Target | Result | Target | Result |
| Increasing the quality and appropriate use of the Māori language and iwi dialect maintenance | ≥ 90% | Achieved Awa FM Average quality standard 94% | ≥ 4.5% | Achieved Awa FM Average quality standard 5 |
| Te Korerotanga o te Reo -Increasing the use of Māori Language among whanau Māori and other New Zealanders, especially in the home Te Ako i te Reo - increasing the number of whanau Māori and other New Zealanders who can speak Māori Te Kounga o te Reo | At least 90% of samples of completed projects or programmes are assessed as meeting the required Māori language content according to target audience group. | Achieved Annual Average for Awa FM 9 hours, 7 mins ¹ | ≥ 10.5 hours within a 24 hour broadcast window | Achieved Annual Average for Awa FM 11 hours, 26 mins |
| Increase station audience size from the base measure recorded by TNS Research | No longer applicable | No longer applicable | ≥ 5% | Not Achieved Iwi Radio Network audience increase in 2021/22 was -4% |
| Broadcast Quality - The on-air content of station broadcasts is assessed as achieving a quality standard of at least 80% based on our agreed Māori Radio Broadcasting Evaluation Framework | No longer applicable | No longer applicable | 80% | Not Achieved Average broadcasting quality standard 61.2% |

¹ Te Mangai Pāho uses a registered Maori Language consultant to assess the quality of samples of broadcasting Maori language content. Please note that while iwi radio content continues to be centrally monitored by Te Māngai Pāho, these results do not form part of TMP external reporting for 2022/23.

Statement of Financial Performance

Te Reo Irirangi O Whanganui Inc For the year ended 30 June 2023

| | NOTES | 2023 | 2022 |
|--|-------|----------------|----------------|
| Revenue | | | |
| Revenue from providing goods or services | 1 | 841,146 | 756,973 |
| Interest, dividends and other investment revenue | 1 | 6,747 | 2,646 |
| Total Revenue | | 847,893 | 759,619 |
| Expenses | | | |
| Volunteer and employee related costs | 2 | 371,325 | 405,536 |
| Costs related to providing goods or service | 2 | 150,540 | 115,613 |
| Grants and donations made | 2 | 500 | 60 |
| Other expenses | 2 | 52,057 | 100,388 |
| Total Expenses | | 574,421 | 621,596 |
| Surplus/(Deficit) for the Year | | 273,471 | 138,023 |

This statement should be read in conjunction with the accompanying notes to the accounts.

Statement of Financial Position

Te Reo Irirangi O Whanganui Inc

As at 30 June 2023

| | NOTES | 30 JUN 2023 | 30 JUN 2022 |
|---|-------|------------------|----------------|
| Assets | | | |
| Current Assets | | | |
| Bank accounts and cash | 3 | 717,221 | 545,210 |
| Debtors and prepayments | 3 | 159,561 | 25,487 |
| Investments | 3 | 225,426 | 220,580 |
| Other Current Assets | 3 | 75 | 75 |
| Total Current Assets | | 1,102,283 | 791,352 |
| Non-Current Assets | | | |
| Property, Plant and Equipment | 5 | 137,861 | 156,751 |
| Other non-current assets | 3 | 1,000 | 1,000 |
| Total Non-Current Assets | | 138,861 | 157,751 |
| Total Assets | | 1,241,144 | 949,103 |
| Liabilities | | | |
| Current Liabilities | | | |
| Creditors and accrued expenses | 4 | 46,734 | 38,167 |
| Employee costs payable | 4 | 36,927 | 29,702 |
| Total Current Liabilities | | 83,661 | 67,869 |
| Non-Current Liabilities | | | |
| Hire Purchase Agreements | 4 | 2,777 | - |
| Total Non-Current Liabilities | | 2,777 | - |
| Total Assets less Total Liabilities (Net Assets) | | 1,154,706 | 881,234 |
| Accumulated Funds | | | |
| Accumulated surpluses or (deficits) | 6 | 1,154,706 | 881,234 |
| Total Accumulated Funds | | 1,154,706 | 881,234 |

This statement should be read in conjunction with the accompanying notes to the accounts .

Statement of Cash Flows

Te Reo Irirangi O Whanganui Inc For the year ended 30 June 2023

| | 2023 | 2022 |
|---|----------------|-----------------|
| Cash Flows from Operating Activities | | |
| Receipts from providing goods or services | 701,304 | 763,856 |
| Interest, dividends and other investment receipts | 5,845 | 2,493 |
| Net GST | 8,331 | 22,392 |
| Payments to suppliers and employees | (535,655) | (602,148) |
| Donations or grants paid | (500) | (60) |
| Total Cash Flows from Operating Activities | 179,325 | 186,533 |
| | 2023 | 2022 |
| Cash Flows from Investing and Financing Activities | | |
| Proceeds from loans borrowed from other parties | 2,777 | - |
| Payments to acquire property, plant and equipment | (5,246) | (26,057) |
| Payments to purchase investments | (4,846) | (1,327) |
| Total Cash Flows from Investing and Financing Activities | (7,315) | (27,384) |
| | 2023 | 2022 |
| Net Increase/(Decrease) in Cash | | |
| Net change in Cash for period | 172,010 | 159,149 |
| | 2023 | 2022 |
| Bank Accounts and Cash | | |
| Bank accounts and cash at beginning of period | 545,210 | 386,062 |
| Bank accounts and cash at end of period | 717,220 | 545,210 |
| Net change in cash for period | 172,010 | 159,149 |

This statement has been prepared without conducting an audit or review engagement, and should be read in conjunction with the attached Compilation Report.

Statement of Accounting Policies

Te Reo Irirangi O Whanganui Inc For the year ended 30 June 2023

Basis of Preparation

The entity has elected to apply PBE SFR-A (NFP) Public Benefit Entity Simple Format Reporting - Accrual (Not-For-Profit) on the basis that it does not have public accountability and has total annual expenses equal to or less than \$2,000,000. All transactions in the Performance Report are reported using the accrual basis of accounting. The Performance Report is prepared under the assumption that the entity will continue to operate in the foreseeable future. The financial statements are presented in New Zealand dollars and rounded to the nearest dollar.

Goods and Services Tax (GST)

The entity is registered for GST. All amounts are stated exclusive of goods and services tax (GST) except for accounts payable and accounts receivable which are stated inclusive of GST.

Income Tax

Te Reo Irirangi O Whanganui Inc is wholly exempt from New Zealand income tax having fully complied with all statutory conditions for these exemptions.

Revenue

Revenue is recognised on an accrual basis and is reported in the financial period to which it relates.

Bank Accounts and Cash

Bank accounts and cash in the Statement of Cash Flows comprise cash balances and bank balances as detailed in Note 3.

Debtors

Debtors are recognised at amount owed, less allowances for any uncollectible amounts. Individual debts that are known to be uncollectible are written off in the period that they are identified.

Investments

Investments are shown at cost price.

Creditors and Accrued Expenses

Creditors and accrued expenses are recognised at amount owing. They represent liabilities for goods and services provided to the entity prior to the end of the the financial year that are unpaid.

Employee Costs Payable

Employee costs payable are amounts owing to, but not yet paid to employees. They are measured at the amount owing.

Fixed Assets

Fixed assets are recorded at cost price and are depreciated at rates that reflect the useful life of the asset.

Changes in Accounting Policies

There have been no changes in accounting policies. Policies have been applied on a consistent basis with those of the previous reporting period.

Notes to the Performance Report

Te Reo Irirangi O Whanganui Inc For the year ended 30 June 2023

| | 2023 | 2022 |
|---|----------------|----------------|
| 1. Analysis of Revenue | | |
| Revenue from providing goods or services | | |
| Advertising Income | 35,408 | 35,491 |
| Grants Received | 793,238 | 721,481 |
| Contracts for Service | 12,500 | - |
| Total Revenue from providing goods or services | 841,146 | 756,973 |
| Interest, dividends and other investment revenue | | |
| Dividends Received | - | 1,075 |
| Interest Received | 6,747 | 1,572 |
| Total Interest, dividends and other investment revenue | 6,747 | 2,646 |
| Total Analysis of Revenue | 847,893 | 759,619 |
| | 2023 | 2022 |

2. Analysis of Expenses

| | | |
|---|----------------|----------------|
| Volunteer and employee related costs | | |
| A.C.C. Levies | 311 | 385 |
| Salaries & Wages | 202,747 | 200,874 |
| Employment Expenses | 569 | 20,072 |
| Staff Development | 461 | 2,363 |
| Contractors | 166,590 | 176,403 |
| Board Expenses | 647 | 5,439 |
| Total Volunteer and employee related costs | 371,325 | 405,536 |
| Costs related to providing goods or services | | |
| Bank Charges | 515 | 417 |
| Copyright | 1,027 | 1,628 |
| Electricity | 5,432 | 10,877 |
| Insurance | 9,712 | 9,828 |
| Lease Expenses | 20,270 | 19,782 |
| Equipment Leases | 27,828 | 27,399 |
| Marketing & Promotion | 4,810 | 7,877 |
| Meeting & Hui Expenses | 5,715 | 1,469 |
| Motor Vehicle Expenses | 17,479 | 7,286 |
| Printing Postage & Stationery | 2,073 | 2,459 |
| Repairs & Maintenance | 6,193 | 4,274 |
| Subscriptions | 12,954 | 8,372 |
| Surveys | 17,961 | - |
| Telephone & Internet | 9,186 | 10,104 |
| Transmission Charges | 6,964 | 362 |
| Travel & Accommodation | 2,419 | 3,479 |
| Total Costs related to providing goods or services | 150,540 | 115,613 |

| | 2023 | 2022 |
|--|------------------|----------------|
| Grants and donations made | | |
| Koha | 500 | 60 |
| Total Grants and donations made | 500 | 60 |
| Other expenses | | |
| Accountancy fee | 4,900 | 5,140 |
| Audit fee | 4,200 | 4,000 |
| Depreciation | 24,136 | 32,095 |
| Interest | 3 | 549 |
| IRD Penalties & Interest | 461 | 794 |
| Professional Services | 18,088 | 57,759 |
| Loss for Assets Written Off | - | 51 |
| Loss on Sale of Assets | 268 | - |
| Total Other expenses | 52,057 | 100,388 |
| Total Analysis of Expenses | 574,421 | 621,596 |
| | 2023 | 2022 |
| 3. Analysis of Assets | | |
| Current Assets | | |
| Bank accounts and cash | | |
| Cheque Account | 654,286 | 485,020 |
| Savings Account | 61,189 | 60,191 |
| ANZ Visa Corporate | 1,746 | (24) |
| Total Bank accounts and cash | 717,221 | 545,187 |
| Debtors and prepayments | | |
| Debtors | 151,045 | 20,373 |
| Accrued Interest | 1,145 | 243 |
| Prepayments | 7,371 | 4,871 |
| Total Debtors and prepayments | 159,561 | 25,487 |
| Investments | | |
| ANZ Term Deposit | 225,426 | 220,580 |
| Total Investments | 225,426 | 220,580 |
| Other current assets | | |
| RWT Paid | 75 | 75 |
| Total Other current assets | 75 | 75 |
| Non-current assets | | |
| Shares - Maori Media Network Ltd | 1,000 | 1,000 |
| Total Non-current assets | 1,000 | 1,000 |
| Total Analysis of Assets | 1,103,282 | 792,328 |

Debtors are stated at their estimated realisable value.

| | 2023 | 2022 |
|---|---------------|---------------|
| 4. Analysis of Liabilities | | |
| Creditors and accrued expenses | | |
| Creditors | 20,784 | 14,356 |
| Credit Card | 500 | - |
| GST | 21,354 | 13,023 |
| Income in Advance | 4,096 | 10,764 |
| Total Creditors and accrued expenses | 46,734 | 38,143 |
| Employee costs payable | | |
| Holiday Pay Accrual | 29,043 | 20,888 |
| PAYE & Accrued Wages | 7,884 | 8,814 |
| Total Employee costs payable | 36,927 | 29,702 |
| Loans | | |
| Hire Purchase - Spark | 2,777 | - |
| Total Loans | 2,777 | - |
| Total Analysis of Liabilities | 86,438 | 67,845 |

Creditors are initially measured at fair value and subsequently measured at amortised cost.

| | 2023 | 2022 |
|--|----------------|----------------|
| 5. Property, Plant and Equipment | | |
| Building Fitout | | |
| Opening Carrying Amount | 114,356 | 110,045 |
| Net Additions / (Disposals) | - | 15,575 |
| Less Depreciation | (11,436) | (11,264) |
| Closing Carrying Amount - Building | 102,921 | 114,356 |
| Fitout Motor Vehicles | | |
| Opening Carrying Amount | 382 | 546 |
| Less Depreciation | (115) | (164) |
| Closing Carrying Amount - Motor | 267 | 382 |
| Vehicles Plant & Equipment | | |
| Opening Carrying Amount | 42,013 | 52,199 |
| Net Additions / (Disposals) | 5,245 | 10,481 |
| Less Depreciation | (12,585) | (20,667) |
| Closing Carrying Amount - Plant & Equipment | 34,673 | 42,013 |
| Total Property, Plant and Equipment | 137,861 | 156,752 |

| | 2023 | 2022 |
|-------------------------------------|------------------|----------------|
| 6. Accumulated Funds | | |
| Accumulated Funds | | |
| Opening Balance | 881,234 | 743,212 |
| Accumulated surpluses or (deficits) | 273,471 | 138,023 |
| Total Accumulated Funds | 1,154,706 | 881,234 |
| Total Accumulated Funds | 1,154,706 | 881,234 |
| | 2023 | 2022 |

7. Commitments

Commitments to lease or rent assets

Land Lease 78 Airport Rd, Whanganui

| | | |
|---|--------------|--------------|
| The entity has entered into a 5 year lease expiring 30 June 2025. The monthly payment due under the lease agreement is \$167.09 + GST | - | - |
| Not later than one year | 2,005 | 2,005 |
| Later than one year but less than five years | 2,005 | 4,010 |
| Total Land Lease 78 Airport Rd, Whanganui | 4,010 | 6,015 |

Office Lease at 357 Victoria Avenue, Whanganui

| | | |
|--|---------------|---------------|
| The entity has a 10 year lease expiring 20 September 2029. The monthly payment due under the lease agreement is \$1,091.67+GST | - | - |
| Not later than one year | 13,100 | 13,100 |
| Later than one year but less than five years | 52,400 | 52,400 |
| Later than five years | 16,375 | 29,475 |
| Total Office Lease at 357 Victoria Avenue, Whanganui | 81,875 | 94,975 |

Office Equipment Lease

| | | |
|--|--------------|--------------|
| The entity has a 5 year lease for Office Equipment expiring 30 October 2024. The monthly payment due under the lease agreement is \$236.76+GST | - | - |
| Not later than one year | 2,841 | 2,841 |
| Later than one year but less than five years | 947 | 3,788 |
| Total Office Equipment Lease | 3,788 | 6,629 |

Motor Vehicle Lease

| | | |
|---|--------------|---------------|
| The entity has entered into a 3 year lease expiring 29 February 2024. The monthly payment due under the lease agreement is \$579.56+GST | - | - |
| Not later than one year | 4,636 | 6,955 |
| Later than one year but less than five years | - | 4,636 |
| Total Motor Vehicle Lease | 4,636 | 11,591 |

Software Products Lease

| | | |
|--|---------------|---------------|
| The entity has entered into a 12 month lease expiring 30 June 2024. The monthly payment due under the lease agreement is \$1,652.93 +GST (incl discount) | - | - |
| Not later than one year | 19,835 | 18,819 |
| Total Software Products Lease | 19,835 | 18,819 |

| | | |
|--|----------------|----------------|
| Total Commitments to lease or rent assets | 114,144 | 138,029 |
|--|----------------|----------------|

8. Capital Commitments

Te Reo Irirangi O Whanganui Incorporated has no capital commitments as at 30 June 2023 (Last year - nil).



9. Contingent Liabilities and Guarantees

Te Reo Irirangi O Whanganui Incorporated has no contingent liabilities or guarantees as at 30 June 2023 (Last year - nil).

10. Credit Facility

Te Reo Irirangi O Whanganui Incorporated operates a corporate credit card. The limit available on the credit card is \$3,000 (Last year \$4,500)

11. Related Parties

Related Party: Nga Tangata Tiaki o Whanganui - lease of 357 Victoria Ave, Whanganui

Nancy Tuaine is a Director of Nga Tangata Tiaki Custodian Trustee Limited.

Lease expense for 2023 \$13,100 (2022: \$13,100)

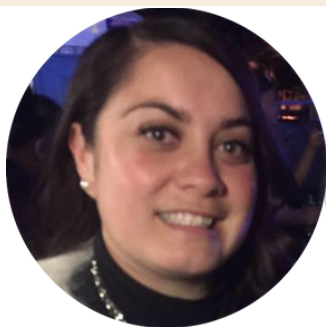
12. Ability to Continue Operating

The entity will continue to operate for the foreseeable future.

HE KOHINGA WHAKAAHUA 2022 - 2032 GALLERY



HE MIHI ACKNOWLEDGEMENTS



As we conclude this annual report, we, the Executive Committee wish to express our appreciation to all those who have contributed to Awa FM's continued success. The journey of the past year has been marked by significant achievements, challenges, and most importantly, the unwavering commitment of our dedicated team, hapori and iwi.

"Nā tōu rourou, nā tōku rourou ka ora ai te iwi."

Acknowledgement is due to our passionate kaimahi who have worked tirelessly to provide our listeners with quality content, our dedicated board members who have provided guidance and oversight, and our iwi who supported us in various capacities. Your tautoko is pivotal to our success.

Special mention to Leigh Marama McLachlan who resigned from the Executive Committee in February, her experience in broadcasting was valuable to setting the strategic direction. In June we welcomed Kylee Osborne, Ngāti Mutunga, Te Ātiawa, Ngāti Mahuta ki Te Tai Hauauru who was recently appointed to the board mihi ana ki a koe me ō tini pūkenga kua piri mai ki te poari.

In closing, we look ahead with optimism and enthusiasm. Our commitment to delivering content that reflects the values of our reo irirangi remains resolute. With your continued support, we are confident that Awa FM will continue to progress in our 5 year plan, grow and thrive.

Thank you for being a part of our journey, and we look forward to the opportunities and challenges that the future holds.

Nā mātou i ngā mihi nui,
Nā te poari.